



Warning:

The product should be assembled by adults.

When using the product, the caregivers must not leave! Keep away from the fire!

Users and guardians should read through the instructions carefully before using this product, and please keep it for future reference. It will tell you the exact operation method and installation procedure to avoid damage or injury to your child's life due to use the product incorrectly.

Babymore
Unit C2, Zenith Industrial Estate, Paycocke Road Basildon, Essex, SS14 3DW.
Telephone: +44 (0)20 3475 5588
Email: customerservices@babymore.co.uk
www.babymore.co.uk

Babymore

more for your baby

Kola 360 Rotate i-Size Baby to Child Car Seat USER MANUAL



FORWARD FACING
ISO/F2X



REAR FACING
ISO/R2



R129.03

Stature: 40-105CM
Weight: up to 18kg
Approx: 0-4 years old

Approved under European ECE R129/03
Manufactured in accordance with ISO9001:2015 quality management system standards

Contents

1. Important Notice.....	3
2. Parts and Interior Equipment.....	5
3. Correct position in the vehicle.....	7
4. Safety in the car.....	8
5. Installation Instructions.....	9
6. Adjusting the Reclining Position.....	10
7. Adjusting the Harness.....	11
8. Adjusting the headrest.....	12
9. Buckle Usage.....	12
10. Installation in the Vehicle.....	13
11. Accessory Config list	15
12. Rearward-facing Use.....	15
13. Forward-facing Use.....	16
14. Removing Child Car seat.....	17
15. Removing the Fabric Cover.....	17
16. Instructions for Use.....	19

User Instructions

Thank you very much for purchasing Babymore car seat . We assure you that in the development process of the car seat we focused on safety, comfort and user friendliness. The product is manufactured under special quality surveillance and complies with the strictest safety requirements.

1. Important Notice

1. Always keep this Instruction Manual with child car seat.
2. The child car seat is suitable for child's height less than 105cm(Weight up to 18kg).
3. For proper protection of your child, it is essential to use and install the car seat according to the instructions given in this manual.
4. Do not use forward-facing before the child is 15 months old and reached a size of 76 cm.
5. Never leave your child unattended in the vehicle. The plastic parts in the child restraint system heat up in sun and the child may sustain burns. Protect your child and the car seat from direct sun exposure (e.g. by covering it with a light colored cloth).
6. Never use the child car seat without fabric cover; Never use any fabric cover which is not recommended by manufacturer to replace old original fabric cover, because the fabric cover constitutes an integral part of the child car seat performance.
7. Never use the car seat on a vehicle seat with an activated front airbag.
8. Please change the child car seat without failure after an accident.
9. The car seat is not allowed to be used on vehicle seats, which are installed at right angles to the direction of travel. The car seat should not be used on rearward-facing seats, for example in a van or minibus. The car seat must always be secured in place with the ISOFIX system, even when not in use. If you have to perform an emergency stop or if you are involved in a minor collision, an unsecured seat can injure you and other customers.
10. In order to guarantee the best possible safety for all passengers make sure that...

- foldable backrests in the vehicle are locked in their upright position.
- when installing the car seat on the front passenger seat, adjust the vehicle seat in rearmost position.
- all objects likely to cause injury in the case of an accident are properly secured.

- all passengers in the vehicle are buckled up

11. Never make any changes the way of harness system in the child car seat, otherwise could seriously affect the security;

12. While travelling the car seat must always be locked in the rearward-facing or forward-facing position. Never use the seat in the loading position or in any unlocked intermediate position while travelling.

13. Always keep the child car seat secured in the vehicle even when it is not unoccupied;

14. Never use the second-hand child car seat;

15. The car seat can be rotated 360°, in order to help to put your child into and take your child out of the vehicle. This also allows you to change the position of the seat from rearward-facing to forward-facing.

16. Items of luggage and other loose objects in the vehicle, which could cause injury in an accident, must always be safely secured. They can become deadly projectiles in the case of a car accident.

17. The child should be clear of any loose parts while making adjustments with the car seat. Keep children away from the car seat during the installation and de-installation in the vehicle. There is a risk that child's fingers can be trapped and are injured by unavoidable scissoring actions.

18. Newborns and infants who are not yet able to sit up by themselves (up to around 1 year) should, for safety reasons, always be transported in the flattest recline position rearward-facing.

19. Contact the service online if you have any question about the using or installation of the child car seat;

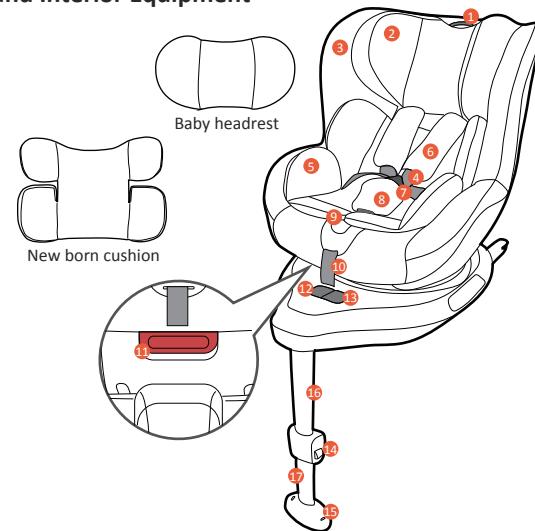
20. The seat is not suitable for use with a normal car seatbelt. If the seat is secured with normal car seatbelt, in case of an accident the child and other occupants of the car may be severely injured or killed.

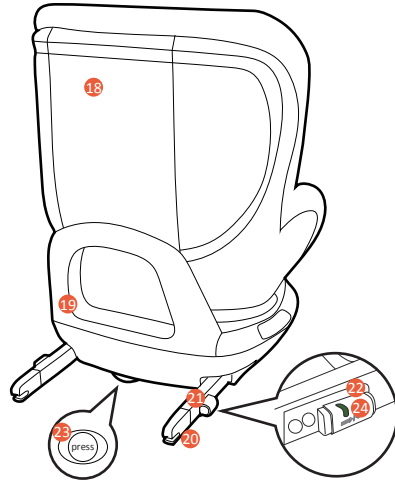
21. Check whether the passenger seat is fitted with ISOFIX. If ISOFIX is not fitted, the car seat may not be used.

"IMPORTANT -DO NOT USE FORWARD FACING BEFORE THE CHILD'S AGE EXCEEDS 15 months (Refer to instructions)".

Installation Methods	Approval type	Facing direction	Stature	Max.mass
ISOFIX+SUPPORT-LEG	I-Size	Rearward	40-105cm	<=18kg
ISOFIX+SUPPORT-LEG	I-Size	Forward	76-105cm	<=18kg

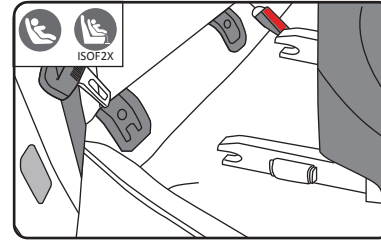
2. Parts and Interior Equipment





- | | |
|-------------------------------|----------------------------------|
| 1. Headrest adjusting handle | 13. Isofix stretch-out button |
| 2. Headrest | 14. Support leg adjusting button |
| 3. Fabric cover | 15. Support leg indicator |
| 4. Shoulder straps | 16. Support leg inside |
| 5. New born cushion | 17. Support leg outside |
| 6. Shoulder pad | 18. Backrest shell |
| 7. Buckle | 19. Base shell |
| 8. Buckle pad | 20. Isofix connector |
| 9. Strap adjusting button | 21. Isofix release button |
| 10. Adjusting strap | 22. Second-lock button |
| 11. Backrest adjusting handle | 23. Support leg release button |
| 12. 360° rotation button | 24. FIX display |

3. Correct position in the vehicle



This child vehicle seat complies with the ISOFIX standard and is suitable for the installation in the vehicle manufacturer's manuals.

The vehicle seat that meets the requirements does not apply to all models. Please read the applicable vehicle list to view your steam whether the vehicle is suitable for the vehicle that is compatible with this product. If your vehicle is not equipped with ISOFIX, please contact the vehicle manufacturer.

In special cases, the child safety seat can be mounted to the front seat of the vehicle. The precautions are as follows:

Check the seat is equipped with an ISOFIX connection system. If the ISOFIX connection system is not installed, it cannot be used this child safety seat.

Disable passenger airbags. If your vehicle cannot disable the airbag, do not install the child car seat on the front seats of the vehicle.

Please always follow the vehicle manufacturer's construction.

Warning! Baggage and items that are likely to cause injury in an accident should be properly secured.



Warning! Never leave your child unattended in the vehicle. The plastic parts in the child restraint system heat up in sun and the child may sustain burns. Protect your child and the car seat from direct sun exposure (e.g. by covering it with a light colored cloth).

Warning! The seat is not suitable for use with a normal vehicle seat belt. If the seat is secured with normal vehicle seat belt, in case of an accident the child and other occupants of the vehicle may be severely injured or killed.

Warning! The child car seat is not allowed to be used on vehicle seats, which are installed at right angles to the direction of travel. The car seat should not be used on rearward-facing seats, for example in a van or minibus. The car seat must always be secured in place with the ISOFIX system, even when not in use. If you have to perform an emergency stop or if you are involved in a minor collision, an unsecured seat can injure you and other customers.



4. The safety in the car

Warning! Cannot be installed in a seat position with an airbag.

Warning! When subjected to a serious accident, the restraint system should be replaced in time.

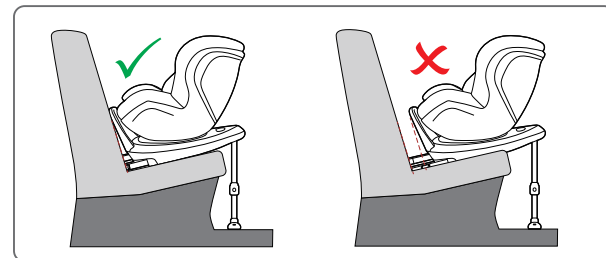
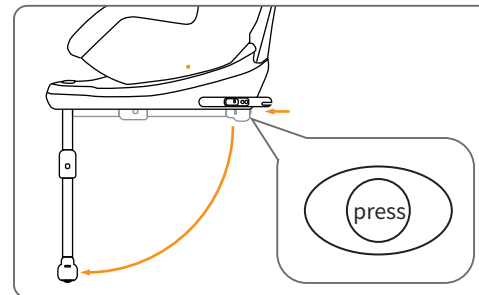
In order to guarantee the best possible safety for all passengers make sure that...

- foldable backrests in the vehicle are locked in their upright position.
- when installing the car seat on the front passenger seat, adjust the vehicle seat in rearmost position.
- all objects likely to cause injury in the case of an accident are properly secured.
- all passengers in the vehicle are buckled up.

Protect the Vehicle

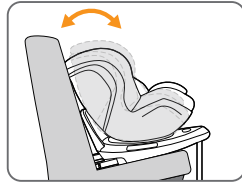
Traces of use and/or discoloration can appear on some vehicle seats made from delicate materials (e.g. velour, leather, etc.) if child car seat are used. You can avoid this by putting, e.g. a blanket or a towel underneath the child car seat. In this context also see our cleaning directions. It is essential that these are followed before the first use of the child car seat.

5. Installation instructions



Caution! Accident statistics verify that in a vehicle the rearward-facing transport of your child is the safest. Therefore we recommend to use the car seat as long as possible in rearward-facing position. Please refer to the operating instructions.

6. Adjusting the Reclining Position



1. Kola offers up to 3 different sitting and reclining positions for the safe and comfortable transport of your child in the car. If wanted, activate the position

adjustment handle 11 on the front of the child seat, to put the child car seat in the required reclining positions. Always make sure that the seat shell locks into place with An audible "CLICK".



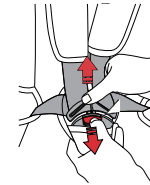
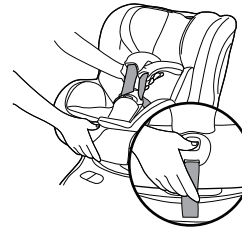
Warning! An adjustment of the seat position is prohibited while travelling!

Warning! Always ensure that the position adjustment handle 11 gives an audible "CLICK" when locking into the lying or seated position.

2. The car seat can be rotated 360°, in order to help to put your child into and take your child out of the vehicle. This also allows you to change the position of the seat from rearward-facing to forward-facing.

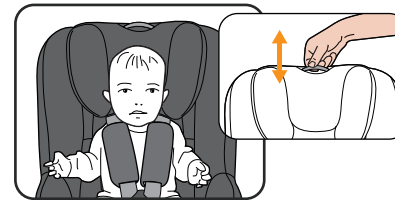
Warning! According to traffic accident statistics, it is safer to install the child safety seat in the opposite direction of the driving direction. Therefore, we recommend using the child safety seat in the backward position for as long as possible. The rearward installation uses stature range of 40cm-105cm. The maximum load is 18kg, about 0-4 years old. We recommend the child safety seat to be installed backwards until your child's stature is up to 105cm and weight up to about 18kg.

7. Adjusting the Harness



Caution! Make sure there are no toys or other items in the child safety seat.

Loosen shoulder straps: press middle adjusting button 9 and at the same time pull both shoulder strap 6 outwards, only pull the shoulder straps not the shoulder pad, separate both sides and put the baby in.



8. Adjusting the headrest

Pull the headrest adjusting handle 1, the headrest moves up along with the shoulder strap; the headrest moves down along with the shoulder strap in reversal way.

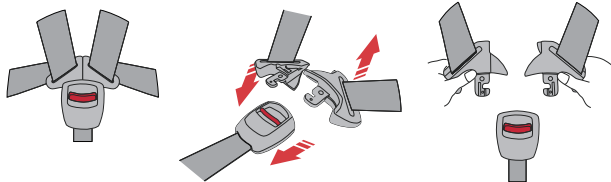
Caution! Loosen the seat belt before adjusting the height of headrest.



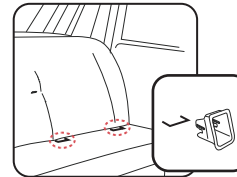
Tighten: Pull the adjusting strap 10 by one hand until the harness lies flat and is close against your child's body.

Caution! Grasp the both shoulder straps 6 by one hand (with index finger and middle finger), and pull the adjusting strap 10 forwards with another hand slowly, when the hand with shoulder strap touch with child body then stop pulling the adjusting strap 10, the strength of shoulder strap is properly.

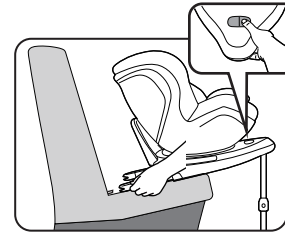
9. Buckle usage



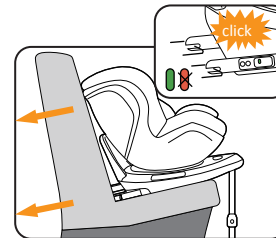
10. Installation in the Vehicle



Warning: if your car do not has the isofix connection system, please read the applicable vehicle instruction book. Please select the appropriate seat installation in the car. Install the ISOFIX guide sleeve on the iron rod of the ISOFIX connection of the car (some cars are not used)



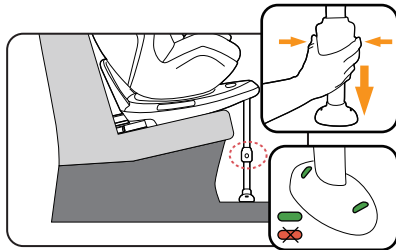
Press the support leg release button 23, open the support leg until locked. Press the isofix stretched out button 13, and pull the isofix connector to the longest by hand.



Push the isofix connector and insert to both sides of isofix iron rod with click noisy, FIX status red and green windows 24 shows green, and pull it externally not to move to be installed successfully. Press the isofix stretched out button 13 and gently push the child seat toward the seat back unit it perfectly aligned with the back of the car.

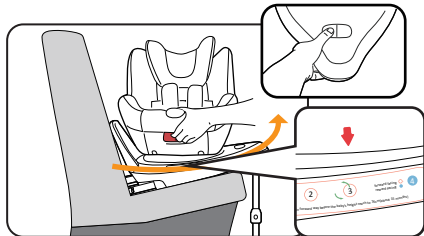
Caution! If in doubt, please refer to the vehicle user's manual.

Caution! Do not place anything under the child seat support leg.



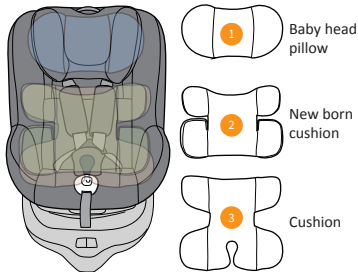
Press the support leg adjusting button and pull the outside support leg. Let it contact the car bottom, Support leg indicator 15 shows green is ok.

Warning! Make sure Kola child safety seat is placed flat on the car seat.



The child car seat can be rotated 360°, in order to help to put in or take out of your child from the vehicle.

11. Accessory config list



Height	Config
<=60cm	1 2 3
60cm-75cm	1 3
75cm-87cm	3
87cm-105cm	

12. Rearward-facing use



1. Please make sure that the child car seat is connected with the vehicle, and check that the installation instructions meet the requirements.
2. Adjust the backrest of child car seat to forward position 3, Press 360° rotation button 12 rotate the seat to rearward position (position 4).
3. The car seat can be used in rearward-facing position up to 105 cm, weight up to 18kg.
4. Press 360° rotation button 12 to rotate the seat to 90° outward position, Put in and fix the baby according to the requirements of Index 7 and turn the seat to rearward position.

Caution! Only 4 positions can be used for rearward, other positions are forbidden to use (See figure above).

12.1. Adjusting the headrest

Caution! To provide your child with the ideal protection and safety, the height of the headrest must be adjusted to the right position. The headrest can be adjusted in height by one key stop. The headrest must be adjusted to a space that is no more than two fingers away from the child's shoulder.

Caution! The shoulder belt 6 is connected to the headrest and cannot be adjusted separately.

Warning! Ensure that the pelvis is well constrained when the belt is on. Make sure the seat belt is lowered downwards and the child's pelvis is firmly restrained.

Warning! It is prohibited to use any force points other than the label to restrain the property.

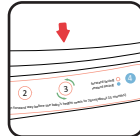
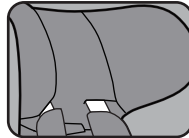
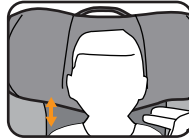
13. Forward-facing use

1. Forward facing (stature 76cm-105cm, weight up to 18kg). For children over 15 months and over 76cm in height, the child car seat can be installed forward.

2. In order to provide best protection for the child, we recommended to use the child car seat in the rearward position as long as possible. If the child's leg space is insufficient, the forward installation can be used.

3. Three positions (1, 2, 3) of child car seat can be adjusted to facilitate the use of different stages (see the indicator).

4. To learn more about how to protect your child, see the "Adjusting reclining position" section.

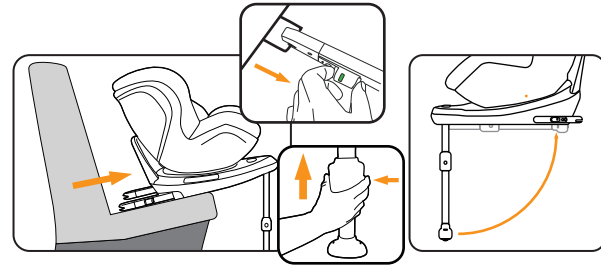


Caution! The child safety seat can be installed rearward-facing until the child reaches 105cm.

Warning! Ensure that the pelvis is well constrained when the belt is on. Make sure the seat belt is lowered downwards and the child's pelvis is firmly restrained.

Warning! It is prohibited to use any force points other than the label to restrain the property.

14. Removing child car seat

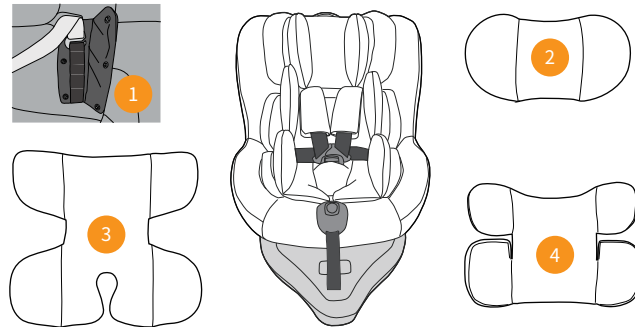


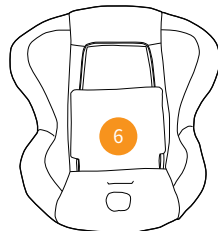
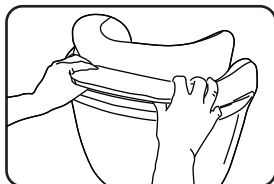
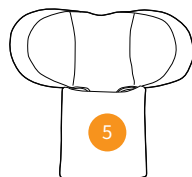
1. Open two sides of the isofix connector button 20 and isofix release button 21 until heard click, and the FIX display shows red is ok. The same as another side.

2. Remove the seat and press the ISOFIX extension button 13 to retract the FIX to the shortest position with one hand.

3. Press the support leg adjustment button 14 to shorten the support leg and fold the support leg back to the hook position below the base.

15. Removing the fabric cover





1. Open the harness buckle and remove the shoulder pad, the buckle pad, headrest and new born cushion in the oedre figures shown.
2. Flip your head against the cloth cover and remove the head cover from the side.
3. Pull out the point of the back cover, pull out the back cover from the gap between the back and the outer cover, and pull out the cover on all four sides of the back to remove the back cover.

16. Instructions for use

Thanks for that buying Babymore car seat.

The illustrations used in this manual are intended to illustrate the operation method and structure of the product. When there is a small difference between the physical object and the figure, the actual product shall prevail.

In order to improve the quality of the product, we may change the structure and appearance of the product without notice. Please understand.

It is important to use an original seat cover only since the cover is an essential part of the function. You may obtain spare covers at your retailer.

Product Care

To guarantee that your car seat provides the maximum protection, it is essential to comply with the following points:

- All major components of the car seat must be regularly checked for damage. The mechanical parts must work without problems.
- Make sure that the car seat is not jammed between hard parts such as the car door, seat rails etc., which can damage it.
- Avoid getting any dirt or sand in between the upper seat shell and the base. This can have a negative impact on the performance of the rotation and recline function. Should this happen the dirt should be removed before rotating and reclining the seat any further to avoid any permanent damage of the seat.

Buckle

Food, juice or other residues may accumulate in the buckle, please wash with warm water.

When the function is normal, you can hear the "click" sound.

Seat belt and plastic parts

Wipe clean with warm water and mild soap.

About the cover

Do not use this product after removing the fabric cover;

The fabric cover can be removed and washed, but we do not recommend that you remove the fabric cover frequently. Once you have removed the fabric cover, be sure to reinstall it in the original structure and make sure that there are no missing or misplaced parts;

WARNING! Please do not use chemical detergents or bleaching agents under any circumstances!

Do not disassemble, move or change any structure or parts of the car seat or harness system of the child safety seat; do not add any lubricant or other chemicals to the fabric cover and seat belt system; shoulder pads and mattresses When washing, please wash them at a temperature below 40 °C and dry it on the tile.

Do not dry clean, tumble dry, and stay away from strong light.

Wash separately, gentle action is warm water.

Content
Cover
surface:Polyester
Filler: Polyester
staple fider
Cover
inside:Polyester



Importance

Please read the instruction manual of your vehicle carefully before using this product.

Please keep this manual in a safe place for repeated review.

This product requires your vehicle seat belt to be a three-point traction type seat belt.

If you have an airbag in your car, use it with caution.

Do not buy second-hand or transfer this type of product.

Please do not put this product on a high place.

Warranty Policy

To ensure your baby is protected from accidental injuries, always check and maintain the child car seat.

one year warranty. (Warranty basis: with proof of purchase and product serial number)